

Standard Style



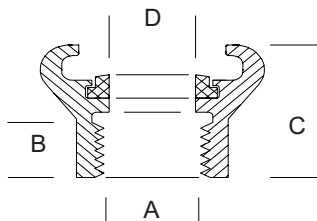
SIZES AVAILABLE: 1-1/4" NPT, 1-1/4" NPS, 1-1/2" NPT, 1-1/2" NPS

COMPONENTS: Aluminum, Brass, Ductile Iron
Buna-N Gasket (Standard Size)

WORKING PRESSURE: 150 PSI maximum recommended operating pressure

STANDARDS: Manufactured to accepted industry standards and inter-changable with all major brands.

DIMENSIONS



<u>Part #</u>	<u>Thread Size</u> A	<u>Thread Length</u> B	<u>Length Overall</u> C	<u>Gasket ID</u> D
SB-1	1-1/4" NPT	3/4"	2-1/16"	1-1/4"
SB-2	1-1/2" NPT	3/4"	2-1/16"	1-1/4"
SB-1S	1-1/4" NPS	1"	2-5/16"	1-1/4"
SB-2S	1-1/2" NPS	3/4"	2-1/16"	1-1/4"

