

CAM & GROOVE COUPLINGS FOR HOSE & PIPE

Specifications

SIZES: 3/4", 1", 1-1/4", 1-1/2", 2", 2-1/2", 3", 4", 5", 6", 8"

COMPONENTS: Body: Aluminum (QQ-A-601, A-380 Aluminum alloy castings)
 Brass (QQ-C-390, Copper alloy castings)
 Stainless Steel (316 Stainless Steel investment castings)
 Ductile Iron (Plated Ductile Iron castings)
 Ny-Glass (Fiberglass Reinforced Nylon / Temp. range: -30° to 200° F)
 Poly-Glass (Fiberglass Reinforced Polypropylene / Temp. range 10° to 180° F)

Handles: Brass
 Stainless Steel

Finger Rings Standard Sizes 1" to 8"

Gasket:	Gasket Material	Gasket Temperature Ratings	Color Code
	Buna-N (Standard)	-40 F to 212 F	Blue
	Neoprene	-60 F to 225 F	Red
	EPDM (Ethylene-propylene-dieneterpolymer)	-60 F to 275 F	White
	Viton-A	-20 F to 500 F	Yellow
	Teflon (Envelope w/ Buna filler)	-40 F to 250 F	---
	Food Grade (White Buna-N)	-40 F to 212 F	---

STANDARDS: Manufactured to Mil Spec 27487 tolerances. Interchangeable with all major brands of this type coupling.

Maximum Operating Pressure

	3/4"	1"	1-1/4"	1-1/2"	2"	2-1/2"	3"	4"	5"	6"	8"
Aluminum	250	250	250	250	250	150	125	100	75	75	50
Brass	250	250	250	250	250	150	125	100	75	75	50
Stainless Steel	250	250	250	250	250	150	150	125	75	75	---
Ductile Iron	---	---	---	150	150	---	150	125	---	---	---
Ny-Glass	100	100	100	100	100	---	50	50	---	---	---
Poly-Glass	100	100	100	100	100	---	50	50	---	---	---

PSI - At Room Temperature

Cam-Lock Coupling Safety Precautions

- Low pressure connection.
- Match product to be conveyed with proper alloy couplings.
- Pressure test hose assembly, prior to application, to ensure tight and leak free assembly of hose, coupling & clamp.
- Fluidized dry products are more abrasive than liquids. In those applications, couplings should be frequently checked for excessive wear and replaced when necessary.
- Pressurized media creates hazardous conditions. Tie-off hose ends to guard against accidental separation of lines and to prevent whipping or bucking of the hose.
- Use handle locking devices.
- Additional Safety information available online: www.hosecoupling.com

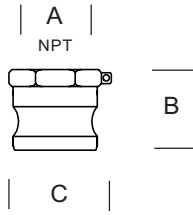
National Equipment Corp.
 1806 Buchanan St.
 Brenham, TX 77833

NECO COUPLINGS
 TEL: 979/830-8030
 TEL: [800-933-2316](tel:800-933-2316)

CAM & GROOVE COUPLINGS FOR HOSE & PIPE

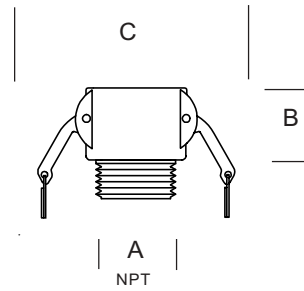
Dimensions

Adapter 'A'



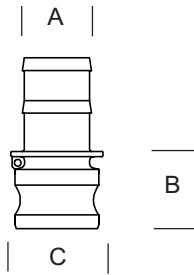
SIZES	A	B	C
3/4"	3/4"	1-1/2"	1-1/2"
1"	1"	1-7/8"	1-3/4"
1-1/4"	1-1/4"	2-1/8"	2-1/8"
1-1/2"	1-1/2"	2-1/4"	2-1/2"
2"	2"	2-1/2"	2-7/8"
2-1/2"	2-1/2"	2-3/4"	3-1/2"
3"	3"	2-3/4"	4-1/8"
4"	4"	3-1/8"	5-3/8"
5"	5"	3-3/8"	6-1/2"
6"	6"	3-7/8"	8"
8"	8"	4-5/8"	10-1/8"

Coupler 'B'



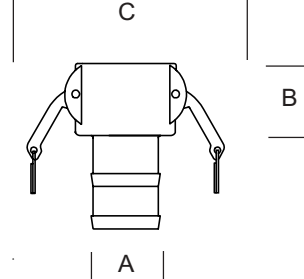
SIZES	A	B	C
3/4"	3/4"	1-3/8"	4-1/2"
1"	1"	1-5/8"	5-1/8"
1-1/4"	1-1/4"	1-3/4"	6-7/8"
1-1/2"	1-1/2"	1-7/8"	7-1/4"
2"	2"	2-1/8"	7-5/8"
2-1/2"	2-1/2"	2-1/4"	8-1/8"
3"	3"	2-3/8"	9-7/8"
4"	4"	2-3/8"	11"
5"	5"	2-1/2"	12"
6"	6"	2-5/8"	16-1/4"
8"	8"	4-1/8"	18"

Adapter 'E'



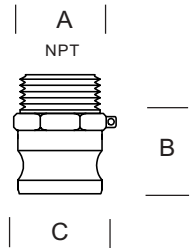
SIZES	A	B	C
3/4"	3/4"	1-3/8"	1-1/4"
1"	1"	1-3/4"	1-5/8"
1-1/4"	1-1/4"	2"	2"
1-1/2"	1-1/2"	2-1/4"	2-3/8"
2"	2"	2-1/4"	3"
2-1/2"	2-1/2"	2-1/2"	3-3/8"
3"	3"	2-1/2"	4-1/8"
4"	4"	4-5/8"	5-1/8"
5"	5"	3"	6-1/4"
6"	6"	3-1/4"	7-3/8"
8"	8"	3-7/8"	10-3/8"

Coupler 'C'



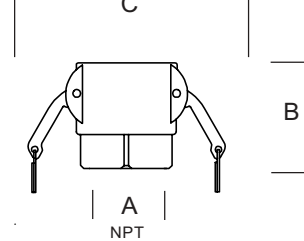
SIZES	A	B	C
3/4"	3/4"	1-3/8"	4-1/2"
1"	1"	1-5/8"	5-1/8"
1-1/4"	1-1/4"	1-3/4"	6-7/8"
1-1/2"	1-1/2"	1-7/8"	7-1/4"
2"	2"	2-1/8"	7-5/8"
2-1/2"	2-1/2"	2-1/4"	8-1/8"
3"	3"	2-3/8"	9-7/8"
4"	4"	2-3/8"	11"
5"	5"	2-1/2"	12"
6"	6"	2-5/8"	16-1/4"
8"	8"	4-1/8"	18"

Adapter 'F'



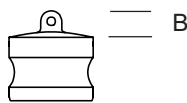
SIZES	A	B	C
3/4"	3/4"	1-7/8"	1-5/8"
1"	1"	2-1/8"	1-3/4"
1-1/4"	1-1/4"	2-3/8"	2-1/8"
1-1/2"	1-1/2"	2-3/8"	2-3/8"
2"	2"	2-3/4"	2-7/8"
2-1/2"	2-1/2"	3-1/4"	3-1/2"
3"	3"	3-1/8"	4-1/8"
4"	4"	3-5/8"	5-1/4"
5"	5"	3-3/4"	6-1/8"
6"	6"	3-3/4"	8-1/8"
8"	8"	5-3/4"	10"

Coupler 'D'



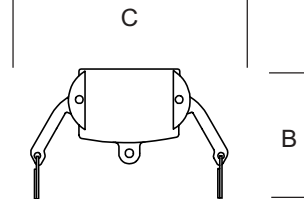
SIZES	A	B	C
3/4"	3/4"	2-1/8"	4-1/2"
1"	1"	2-5/8"	5-1/8"
1-1/4"	1-1/4"	3"	6-7/8"
1-1/2"	1-1/2"	3"	7-1/4"
2"	2"	3-1/8"	7-5/8"
2-1/2"	2-1/2"	3-3/8"	8-1/8"
3"	3"	3-1/2"	9-7/8"
4"	4"	4"	11"
5"	5"	4-1/2"	12"
6"	6"	5-1/2"	16-1/4"
8"	8"	6-1/4"	18"

Adapter 'DP'



SIZES	A	B	C
3/4"	---	1/2"	---
1"	---	3/8"	---
1-1/4"	---	3/8"	---
1-1/2"	---	1/2"	---
2"	---	5/8"	---
2-1/2"	---	5/8"	---
3"	---	5/8"	---
4"	---	5/8"	---
5"	---	3/4"	---
6"	---	3/4"	---
8"	---	1"	---

Coupler 'DC'



SIZES	A	B	C
3/4"	---	1-7/8"	4-1/2"
1"	---	2-1/2"	5-1/8"
1-1/4"	---	3-1/8"	6-7/8"
1-1/2"	---	3-1/8"	7-1/4"
2"	---	3-1/4"	7-5/8"
2-1/2"	---	3-3/8"	8-1/8"
3"	---	3-7/8"	9-7/8"
4"	---	3-7/8"	10-7/8"
5"	---	4-1/8"	12"
6"	---	5-1/2"	16-1/4"
8"	---	6-1/4"	18"

A = Hose Shank or Pipe Thread size

B = Length exposed from Hose or Pipe

C = Maximum Outside Diameter. Adapters without chain tab. Couplers with handles extended and without finger rings.

National Equipment Corp.
1806 Buchanan St.
Brenham, TX 77833

NECO COUPLINGS
TEL: 979/830-8030
TEL: 800-933-2316