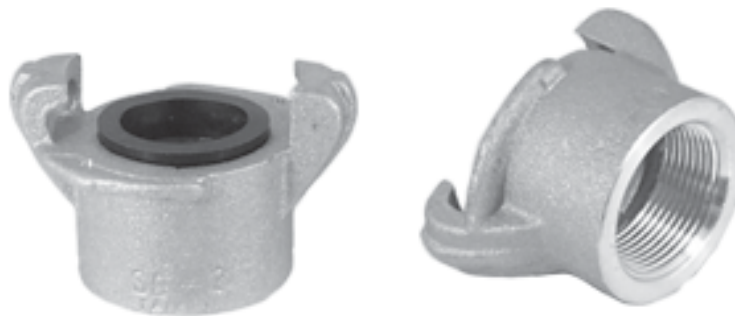


**NPT or NPS Threads**



**SIZES AVAILABLE:** 1-1/4" NPT      1-1/4 NPS  
 1-1/2" NPT

**COMPONENTS:** Aluminum, Brass, Ductile Iron  
 Buna-N Gasket

**MAX WORKING PRESSURE:** Brass & Steel = 175 psi  
 Aluminum = 150 psi

**STANDARDS:** National Pipe Threads [1-1/2 NPSM-2B]

**DIMENSIONS**

	Part #	Thread Size	Thread Length	Length Overall	Gasket ID
	SB-1S	1-1/4" NPS	1"	2-5/16"	1-1/4"
	SB-1	1-1/4" NPT	3/4"	2-1/16"	1-1/4"
	SB-2	1-1/2" NPT	3/4"	2-1/16"	1-1/4"